

concentrates

anti-aging skin care

active powerbooster



Wellmaxx[®]



Concentrating on the things that matter most:

Wellmaxx® concentrates are particularly used whenever normal skin care is not enough, or whenever intensive effects are sought in a very short period of time.

Ampoules are practically the climax of daily skin care and they bring lots of benefits. Whether the first expression lines, dry skin or simply a tired-looking complexion, they are the perfect partner to provide the skin's health, freshness and radiance and to delay the signs of premature aging as long as possible.

The secret can be found in the power of the highly concentrated, unadulterated active ingredients and in a consistency that the skin can rapidly absorb.

Beauty miracles that quickly eliminate tiny imperfections

Regular skin care with full concentration brings visible results. This is because the skin-care benefits with a cure background gives the skin precisely what it currently needs, and what it needs right away.



The concentrated power of active ingredients

These tiny beauty products contain select substances that vitalise, tighten, protect, strengthen and refine the complexion.

Thanks to the low-germ production process, these single-portion ampoules need nearly no preservatives and yet they still stay fresh.

They are much more concentrated than in normal creams and benefit the skin in just seconds.

They are tiny, incredibly handy and efficient – true powerboosters – the concentrates by Wellmaxx®.



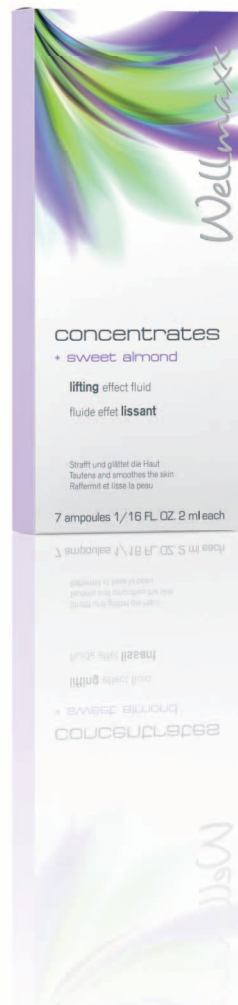


energizing effect fluid

Freshness and vitality for the skin

Concentrated
active ingredients
with vitamins

This is where skin awakens to new life: Vitamins are essential to many of the body's functions. This is also true for an intensive-care approach that can only benefit tired skin. For good reason, the balanced concentrate of active ingredients covers the spectrum of vitamin A, C, E and even vitamins B5 and H (biotin). The skin appreciates this, even after the first application, and it reacts promptly: the elastic-smooth complexion leaves the skin with a convincing freshness and vitality.



lifting effect fluid

Tightens and smoothes the skin

Concentrated
active ingredients
with sweet almond extract

In terms of its appearance, practically a fountain of youth, because the focus of these concentrated ingredients is on the anti-aging effect. The active ingredients are selected to reduce in the depth of expression lines and leave the skin smoother-looking. Sweet almond is responsible for these effects, because it has the capacity to promote the skin's hydroregulation and powers of regeneration. The trick is the combination with what is known as 'phytohormones', which act against the effects of time. The contours of the face appear firmer and denser and tiny expression lines are reduced.





protection effect fluid

Protects and revitalises the skin

Concentrated
active ingredients
with **tea complex**

Tea time for a youthful appearance and lively skin! What this calls for is a triple complex of green, white and red tea that strengthens the skin's powers of resistance, which can prevent premature signs of aging. This takes place on the basis of an extensive, oxidative protection of the skin against the harmful attacks of free radicals. Fundamental requirements for keeping sunlight-caused skin aging at bay while leaving the skin visibly smoother and more radiant!

That is the formula for an attractive, youthful appearance: protection and vitality in one...



vitalizing effect fluid

Enlivens and refines the skin

Concentrated
active ingredients
with **ginkgo biloba extract**

Select extracts from the leaves of the ginkgo biloba tree attest to the powers of this impressive tree. They provide the kind of even complexion that is created when tissue is stimulated. That is exactly what is involved here: Thanks to this active ingredient from the Far East, microcirculation and oxygen supply improve – a clear sign of energy and vitality.

At the same time, it protects the skin against the negative consequences of free radicals. This all-round deluxe care reveals itself in a refined complexion full of enlivening freshness.





repair effect fluid

Strengthens the natural skin function

Concentrated active ingredients with evening primrose extract

This is where order comes to the finely balanced equilibrium of the skin. Because its normal functions are co-ordinated to guarantee a high level of supply of all of the essential materials. A concentrate of active ingredients can also take over if these materials are in short supply: with valuable extract from the seeds of the evening primrose, it is particularly rich in essential fatty acids. These fatty acids succeed in activating the metabolic processes in the skin and the functions of the cell. As a result, any bottlenecks in supply vanish in favour of smoothness and suppleness. Skin in its natural equilibrium looks simply better!!

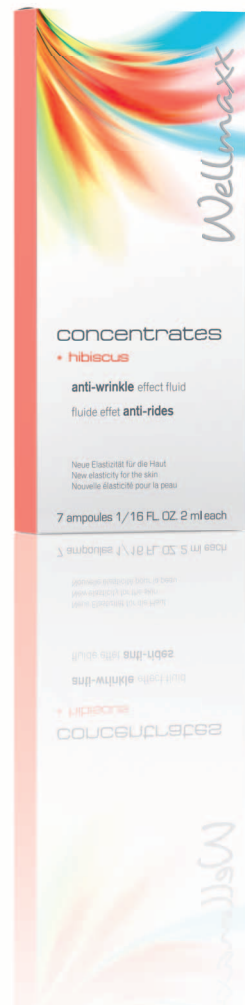


anti-wrinkle effect fluid

New elasticity for the skin

Concentrated active ingredients with hibiscus extract

Pronounced facial play is testimony to a life with a past, but it mustn't be permanently reflected in the complexion. A youthful and firm appearance is the recipe of choice for every age. This concentrate of effective ingredients was designed with this standard in mind. It contains a vegetable-based protein complex from the hibiscus plant that can help reduce horizontal and vertical mimic lines. This effect comes about because the mallow plant has a relaxing and at the same time elasticity-boosting effect on the complexion, while the anti-aging properties are further strengthened by antioxidative protection against free radicals. Double effects are simply superior. The skin looks much firmer and smoother.



concentrates + vitamins
concentrates + sweet almond
concentrates + tea complex
concentrates + ginkgo biloba
concentrates + evening primrose
concentrates + hibiscus

energizing effect fluid lifting effect fluid protection effect fluid vitalizing effect fluid repair effect fluid anti-wrinkle effect fluid

Concentrate with essential vitamins that rapidly provides the skin with extensive freshness and vitality. The complexion shows its gratitude to this intensive-care supply with essential nutrients - with an appearance that is smoother and supple at the same time.

Concentrate with sweet almond extract and phytohormones that tightens and smoothes the skin. The anti-aging effect can manifest itself through reduced depth in expression lines, leaving the contours of the face firmer and denser in appearance.

Concentrate with tea complex for a youthful appearance and lively skin. Only intact powers of resistance and oxidative protection can prevent premature signs of aging – for a smooth, radiant complexion.

Concentrate with ginkgo biloba extract that invigorates and refines the skin. With stimulation of the tissue, improved microcirculation and protection against free radicals, the complexion gains an even appearance full of energy and vitality.

Concentrate with evening primrose extract to strengthen the natural functions of the skin, and for a healthy balance. Essential fatty acids activate the metabolic processes and the functions of the cells to promote smooth and supple skin.

Concentrate with hibiscus extract for new suppleness. The vegetable-based protein complex helps reduce mimic lines and relax the complexion. These anti-aging properties are further strengthened by antioxidative protection, so that the skin can present itself in a firmer and smoother-looking light.

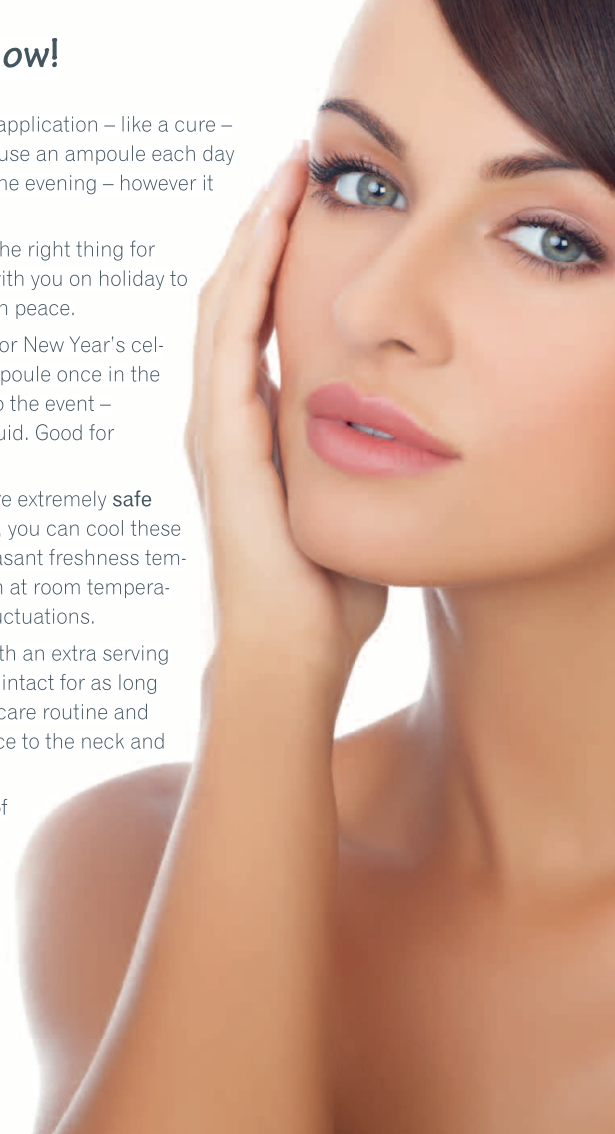
- Vitamins B, B5 (panthenol), H (biotin), C, E, A and F
- Sweet almond extract
- Isoflavone
- Soy bean extract
- Complex consisting of white tea, green tea, red tea
- Ginkgo biloba extract
- Lotus extract
- Evening primrose extract
- Vegetable proteins (from the blossoms of the white lupin)
- Hibiscus protein complex
- Caffeine
- Hydrosystem Aquaxyl

7 x 2 ml 7 x 2 ml 7 x 2 ml 7 x 2 ml 7 x 2 ml 7 x 2 ml



Application tips: Good to know!

- ➔ **Concentrate on your concentrates:** Regular application – like a cure – guarantees optimal effects! That means: You use an ampoule each day for seven days in a row, either in the morning or in the evening – however it fits in best with your skin-care routine.
- ➔ **Holiday enjoyment:** A double portion is just the right thing for your 'time off': take two one-week packages with you on holiday to benefit from added care you can deliberately enjoy in peace.
- ➔ For a **special event** such as a wedding, party or New Year's celebration, preparation is important: use an ampoule once in the morning and once in the evening in the days prior to the event – preferably **lifting** effect fluid or **anti-wrinkle** effect fluid. Good for photo appointments, too!
- ➔ Thanks to their one-time portion, ampoules are extremely **safe and convenient:** During the summer months, you can cool these glass 'mini power plants' in the refrigerator to a pleasant freshness temperature. In winter, though, make sure to store them at room temperature to spare your skin the impact of temperature fluctuations.
- ➔ The **neck and neckline** can also always do with an extra serving of skin care to keep your youthful suppleness intact for as long as possible. So add these regions to your daily skin-care routine and distribute the content of the ampoule beyond the face to the neck and neckline.
- ➔ Before you **open the ampoule**, tap the head of the ampoule with your fingernail until the drops have flowed through the neck down into the ampoule – only then should you break open the ampoule by placing a facial tissue over the neck of the ampoule and breaking the tip against the direction of the marking.





Do you have any questions?
Our Wellmaxx®-Customer Service is there
to assist you:
Tel.: +49 (0)22 34/984 229 66
Fax: +49 (0)22 34/984 227 12
e-mail: kundenservice@wellmaxx.com
For further information, visit: www.wellmaxx.com

Wellmaxx®

Wellmaxx® is a registered brand of SP-GmbH, Pulheim, Germany
All Wellmaxx® products are developed and produced in Germany.

SP-GmbH & Co. KG

Carl-Friedrich-Gauß-Straße 11 • 50259 Pulheim, Germany

